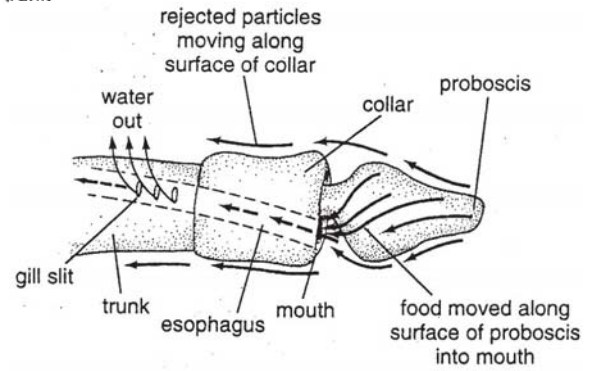
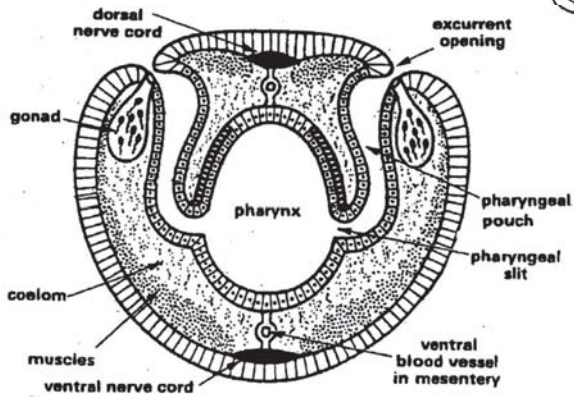
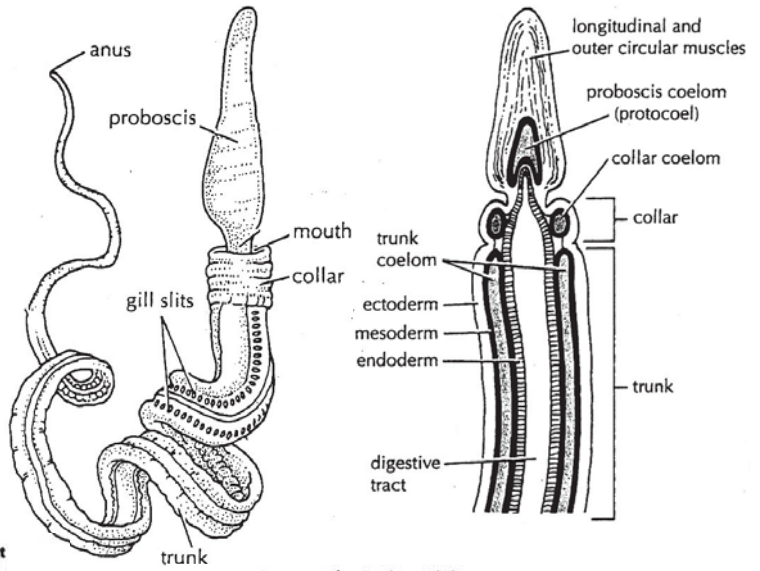
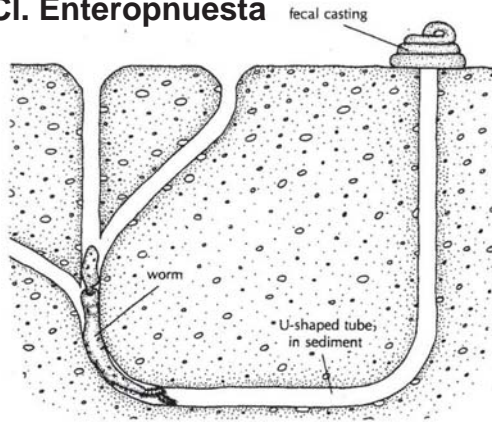
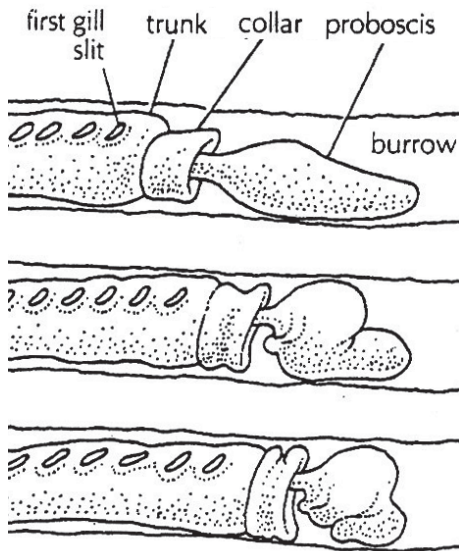


Ph. Hemichordata

Cl. Enteropneusta

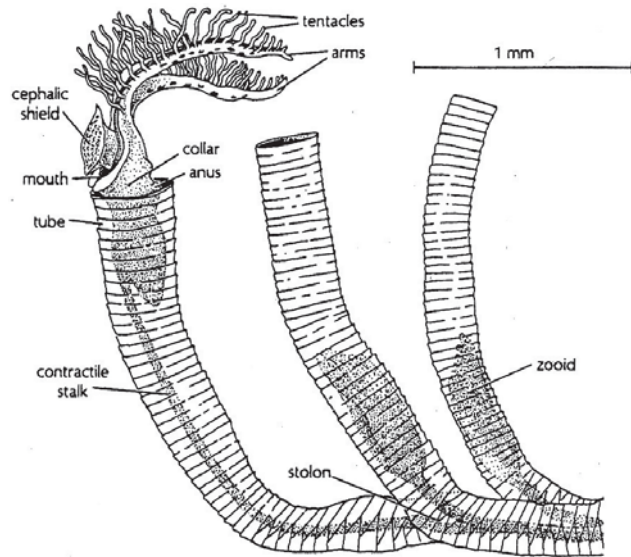


Ph. Hemichordata



Cl. Enteropneusta

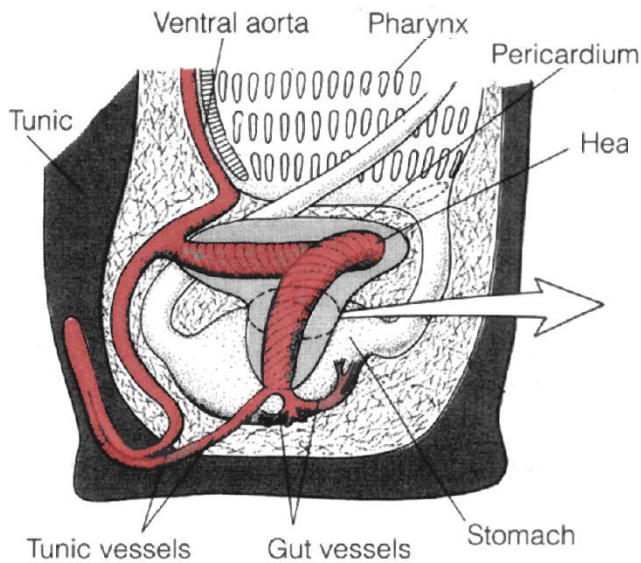
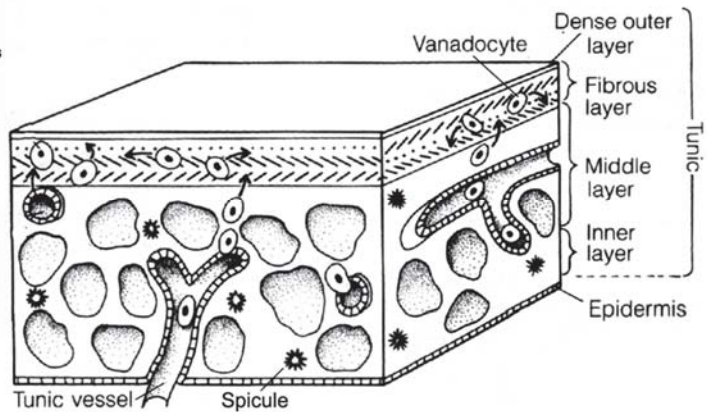
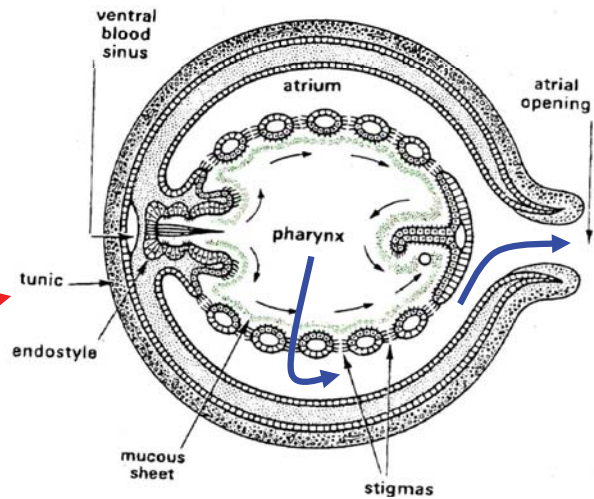
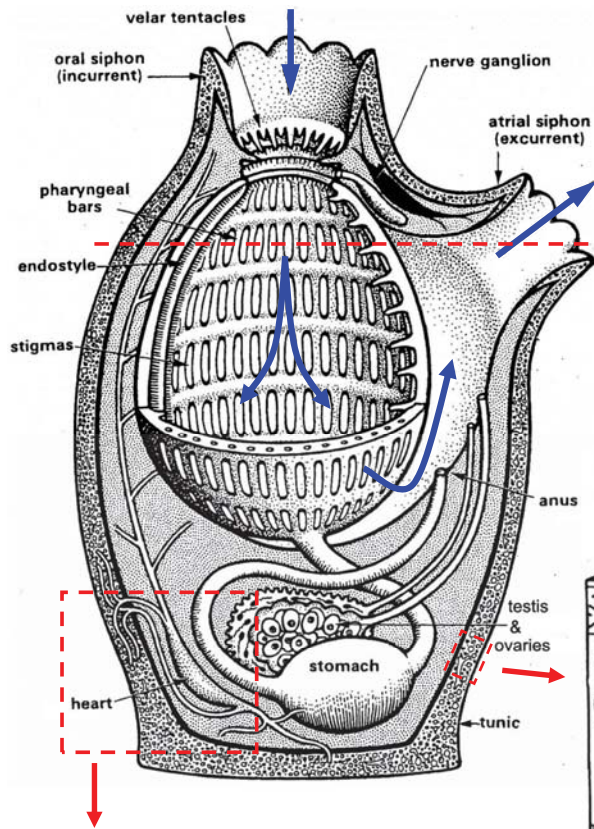
- large, solitary, burrowers
- deposit feeders



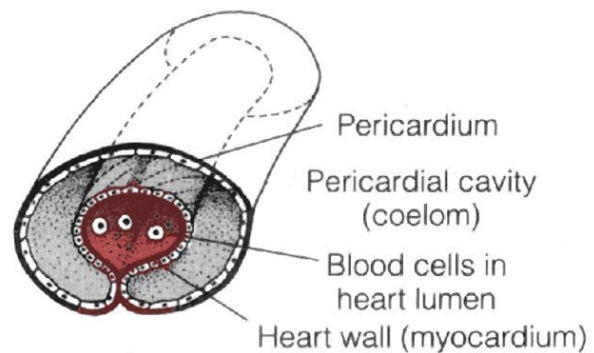
Cl. Pterobranchia

- small, colonial, tentacled
- suspension feeders

Ascidian body plan

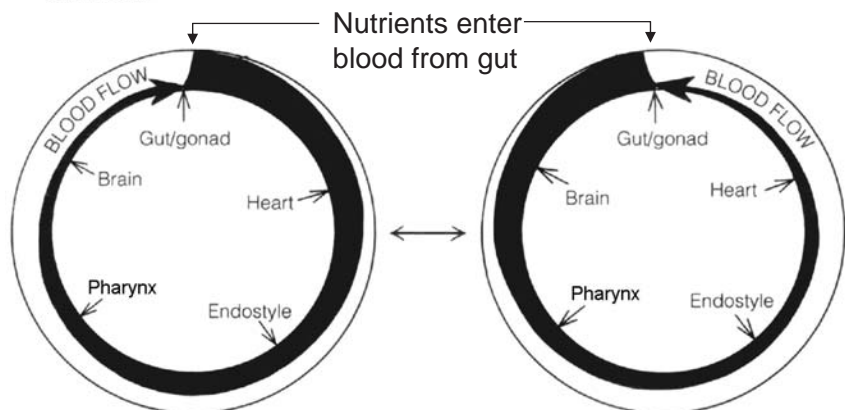


Ascidian hemal system

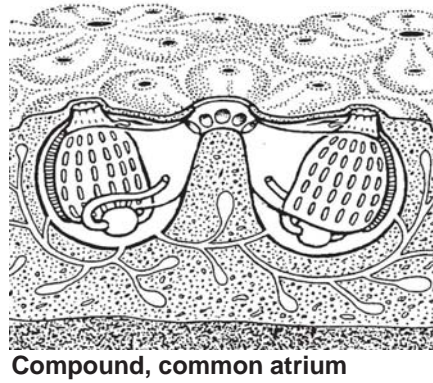
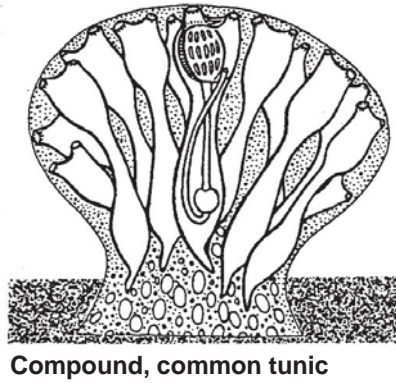
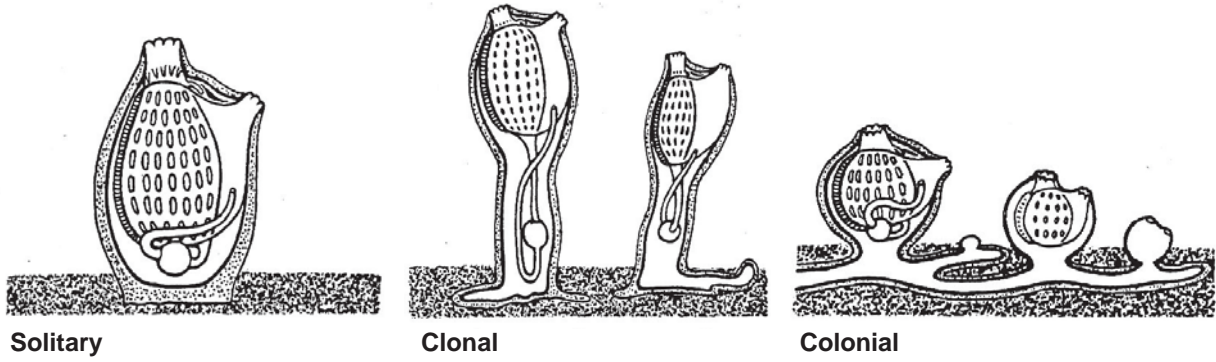


Unique features

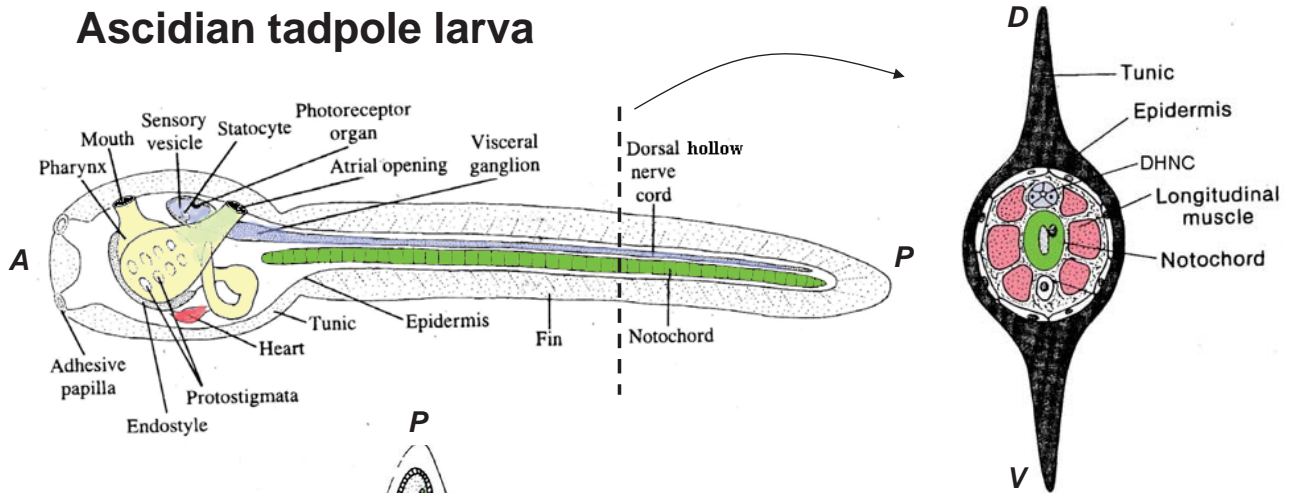
- construction of tube
- wringing action
- double pacemaker
- reversal
- organs lie in series



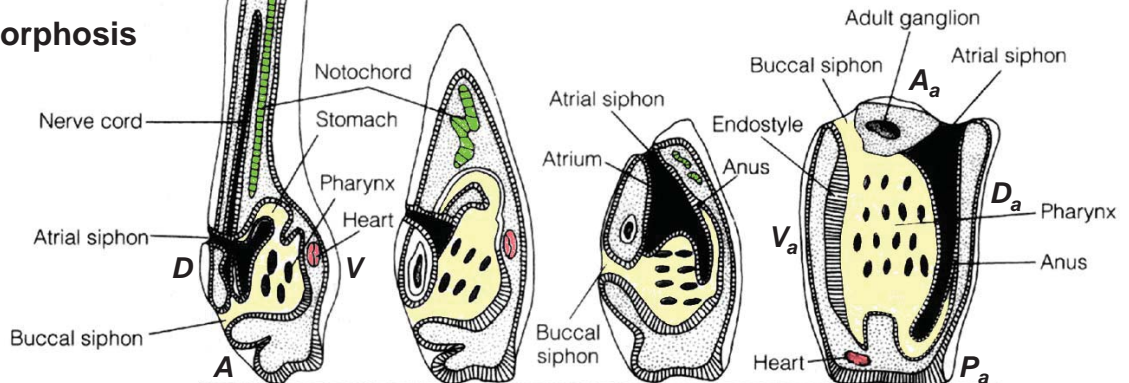
Ascidian variation in body form



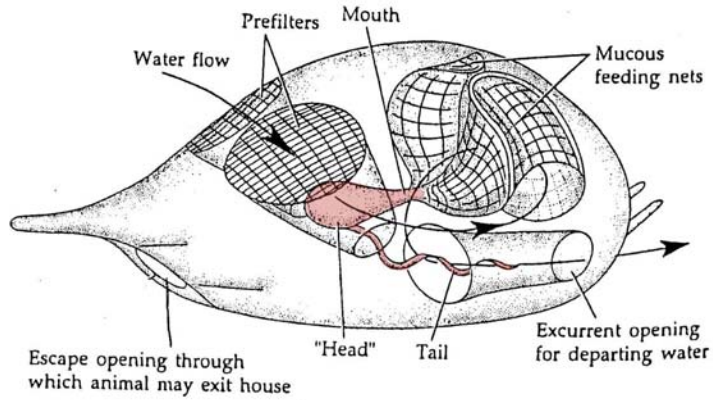
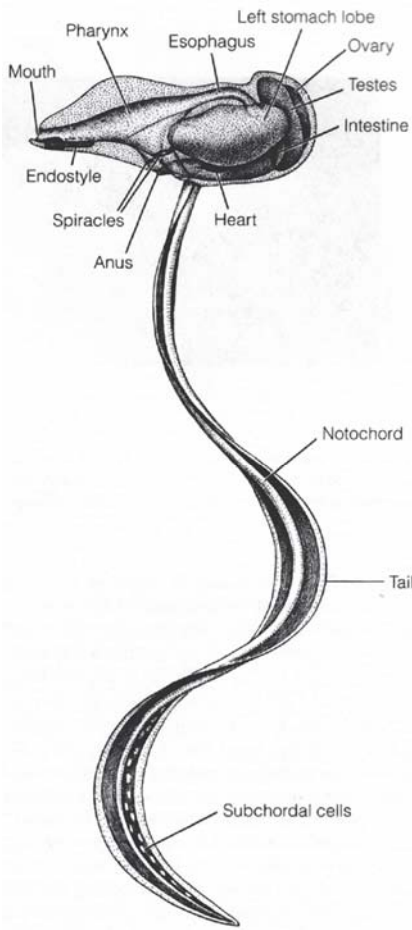
Ascidian tadpole larva



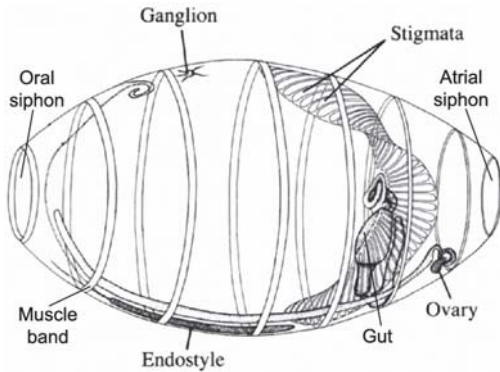
metamorphosis



Subph. Urochordata
Cl. Larvacea (= Appendicularia)

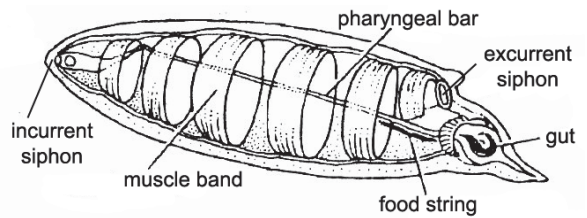


doliolids (23 spp.)



Subph. Urochordata
Cl. Thaliacea

salps (40 spp.)



pyrosomes (10 spp.)

