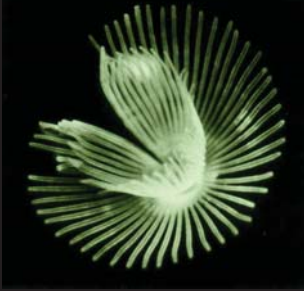


The "lophophorate" phyla

Ph. Phoronida



Ph. Bryozoa



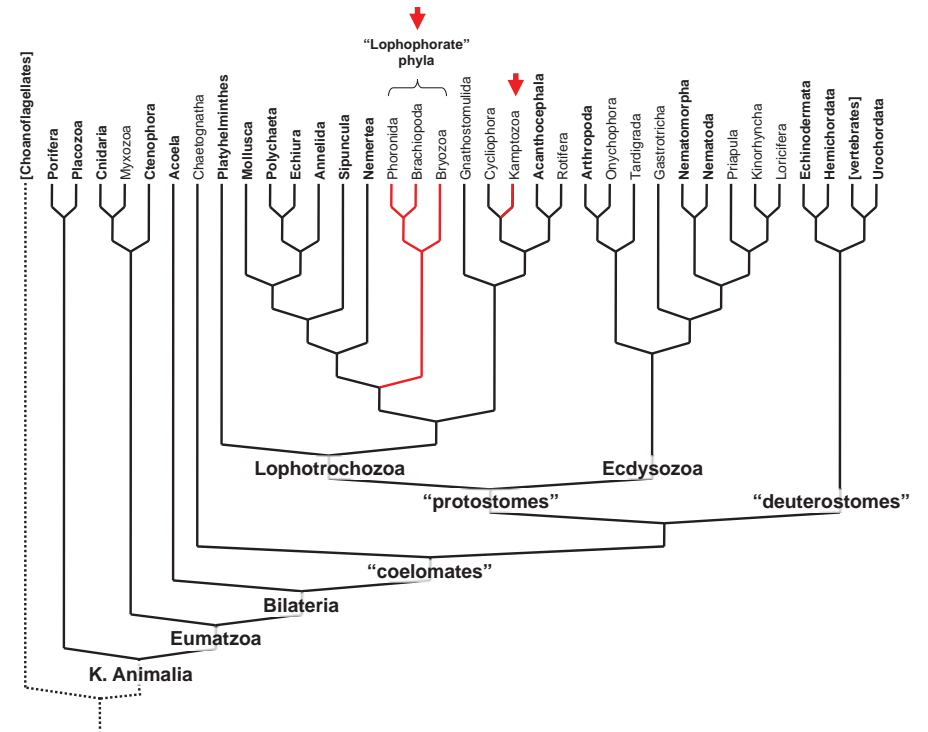
Ph. Brachiopoda



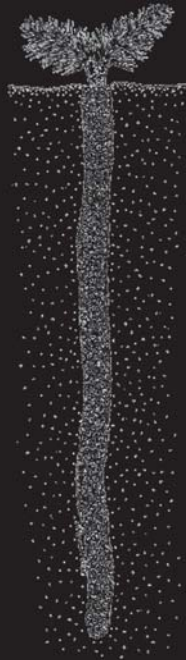
Ph. Kamptozoa



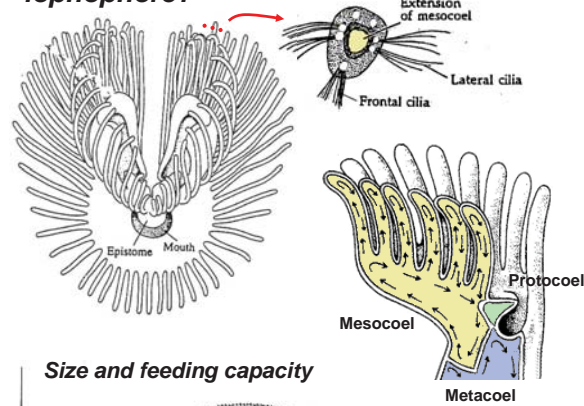
Theme: scaling of feeding capacity and size limitation



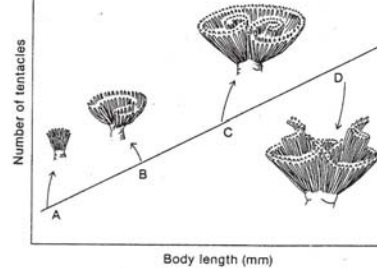
Ph. Phoronida



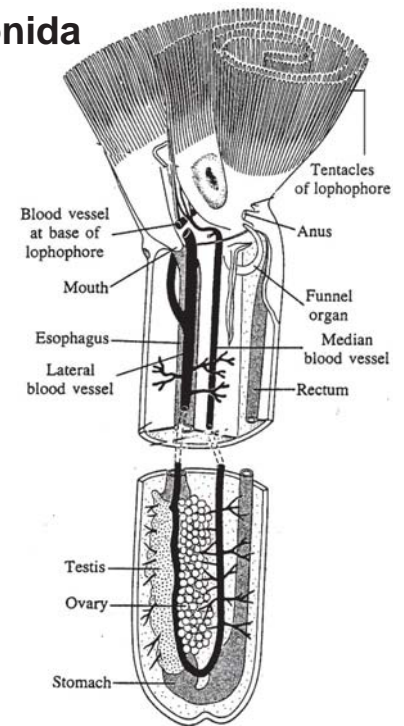
What's a lophophore?



Size and feeding capacity



Ph. Phoronida



Ph. Brachiopoda

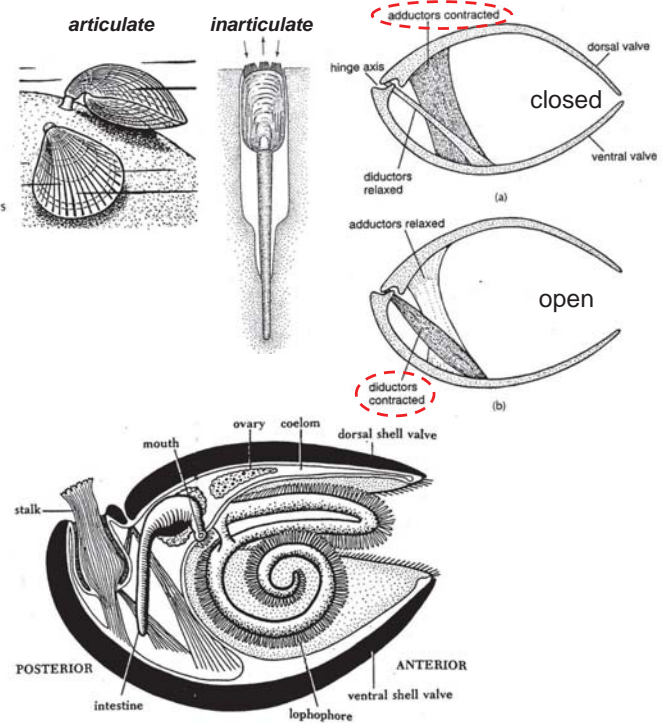
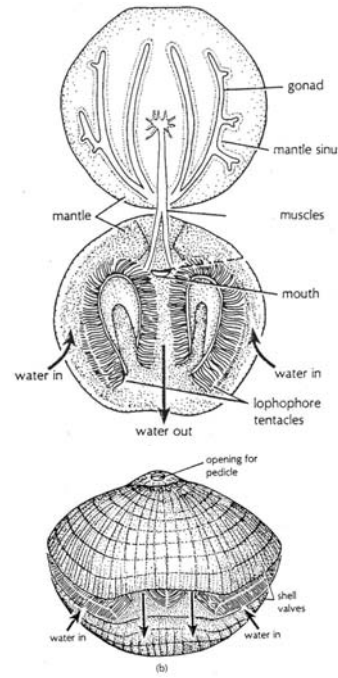
Cl. Articulata



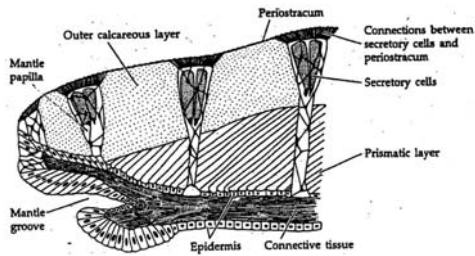
Cl. Inarticulata



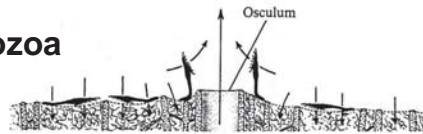
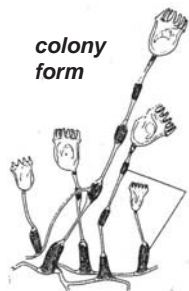
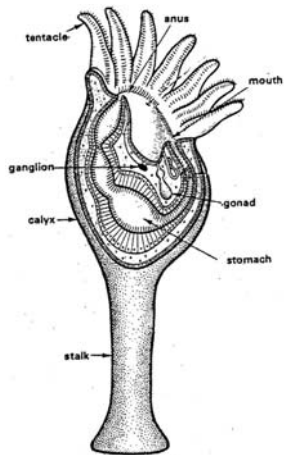
Ph. Brachiopoda



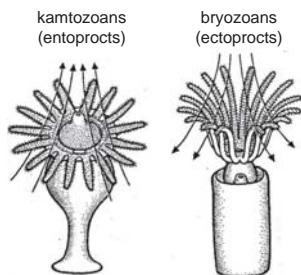
BRACHIOPOD mantle and shell production: convergence with bivalve molluscs?



Ph. Kamptozoa

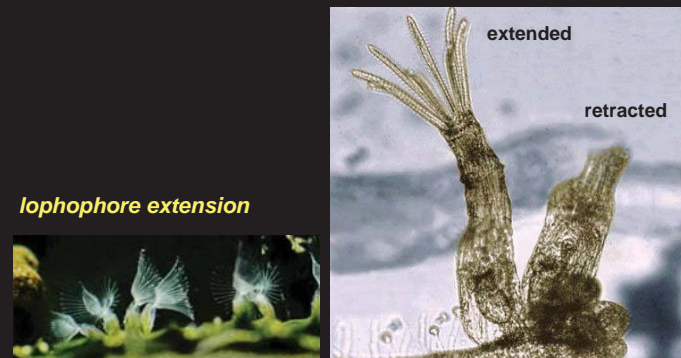
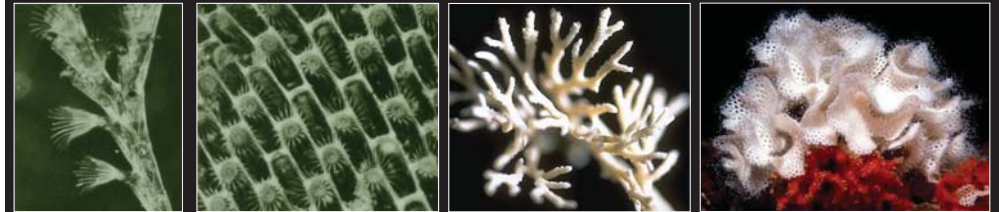


water flow & waste elimination



Ph. Bryozoa

variation in colony form



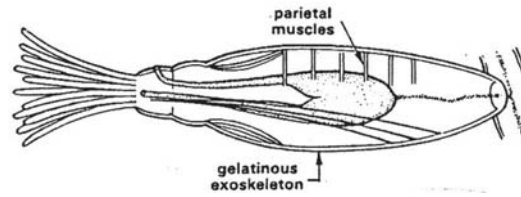
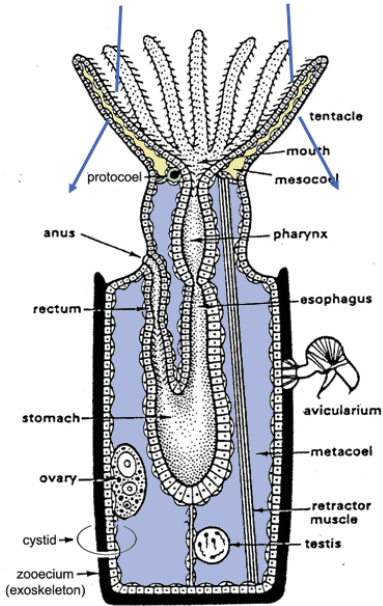
lophophore extension

zooid specialization

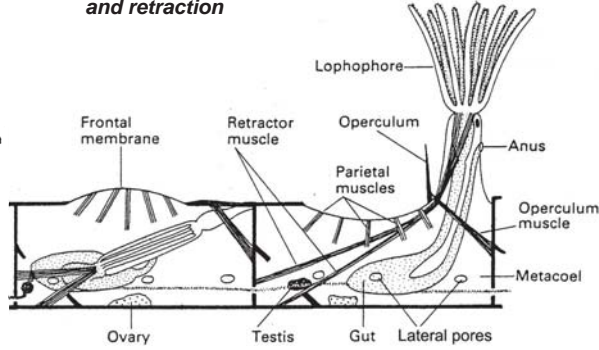


Ph. Bryozoa

(= Ectoprocta)



Lophophore extension and retraction



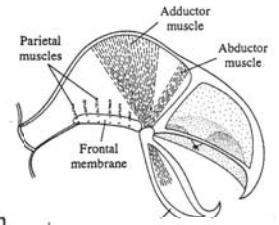
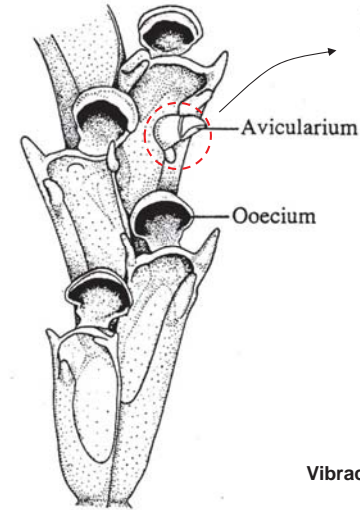
Ph. Bryozoa

(= Ectoprocta)

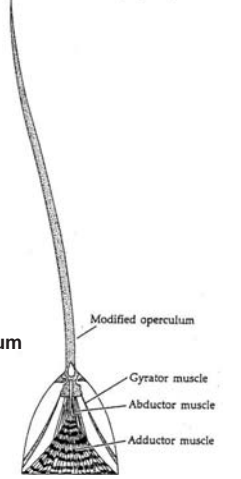
Size and feeding capacity



Zoid specialization



Vibraculum



Ph. Kamptozoa

(= Entoprocta)

